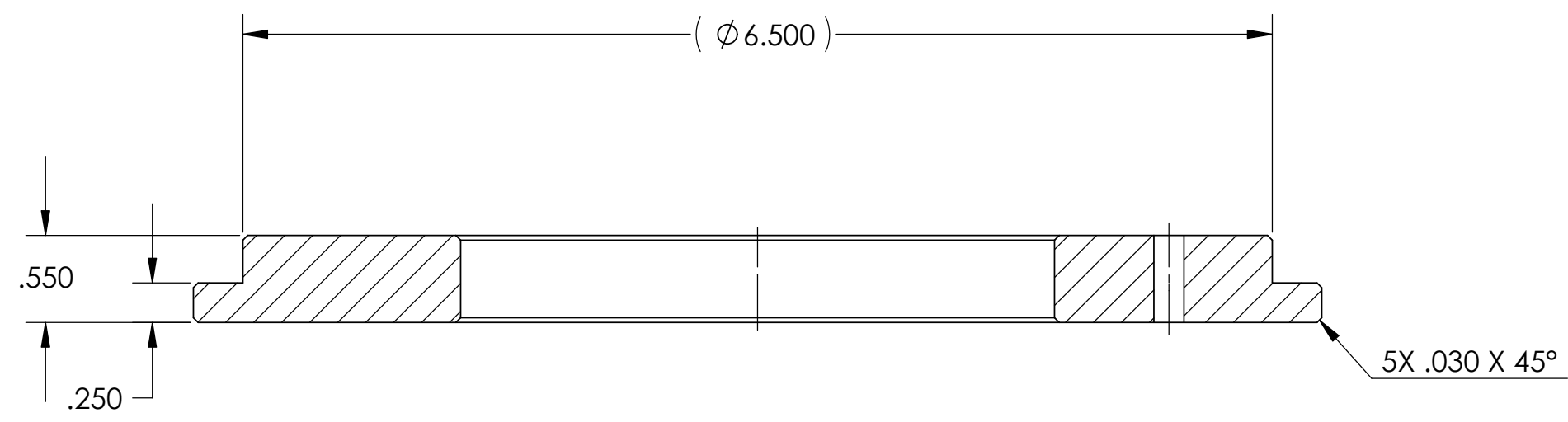


3X $\phi .159$ THRU ALL
 10-32 UNF - 2BTHRU ALL
 $\phi 5.196$ B.C., EQ SPCD



SECTION A-A

2. ANODIZE PER MIL-A-8625F, TYPE 2, CLASS 2, BLACK.
 1. ALL DIMENSIONS APPLY AFTER FINISH.
 NOTES: UNLESS OTHERWISE SPECIFIED

UNLESS OTHERWISE SPECIFIED TOLERANCES		NAME	DATE	PLANEWAVE Instruments	
DECIMAL DIM	ANGULAR DIM	DRAWN	BP		
.XXXX ± .0005	MACHINED ± 0° 30'	CHECKED			TITLE ADAPTER, CDK20 TO CLEMENT FOCUSER
.XXX ± .005	LOCATING ± 0° 30'	ENG APPR.			
.XX ± .02	FORMED ± 1°				MATERIAL 6061-T6 AL ALLOY
SURFACE FINISH $\sqrt{63}$	CHAMFERS ± 5°				
MAX R 0.015					FINISH SEE NOTE
BREAK ALL SHARP EDGES & REMOVE BURRS.					
PROPRIETARY AND CONFIDENTIAL THE INFORMATION CONTAINED IN THIS DRAWING IS THE SOLE PROPERTY OF PLANEWAVE INSTRUMENTS. ANY REPRODUCTION IN PART OR AS A WHOLE WITHOUT THE WRITTEN PERMISSION OF PLANEWAVE INSTRUMENTS IS PROHIBITED.				SIZE C	DWG. NO. 200379
				SCALE: 1:1	CAD FILE 200379A
					REV. A
					SHEET 1 OF 1