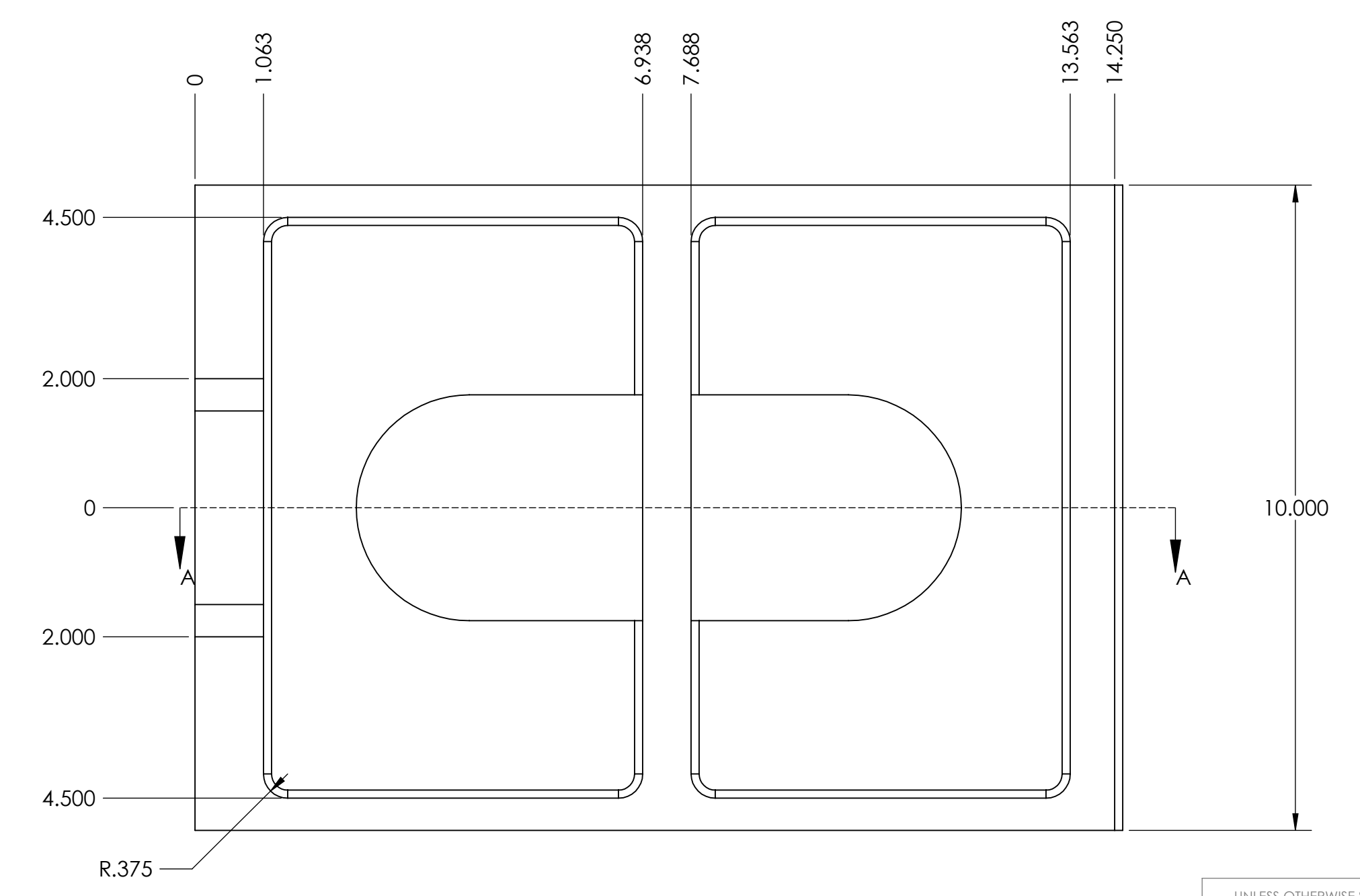
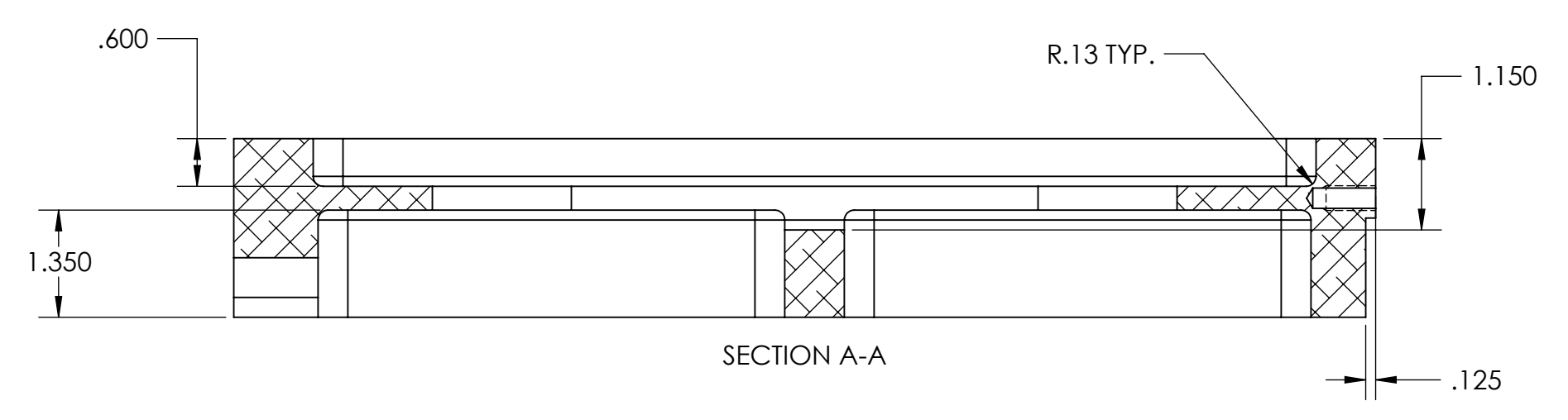
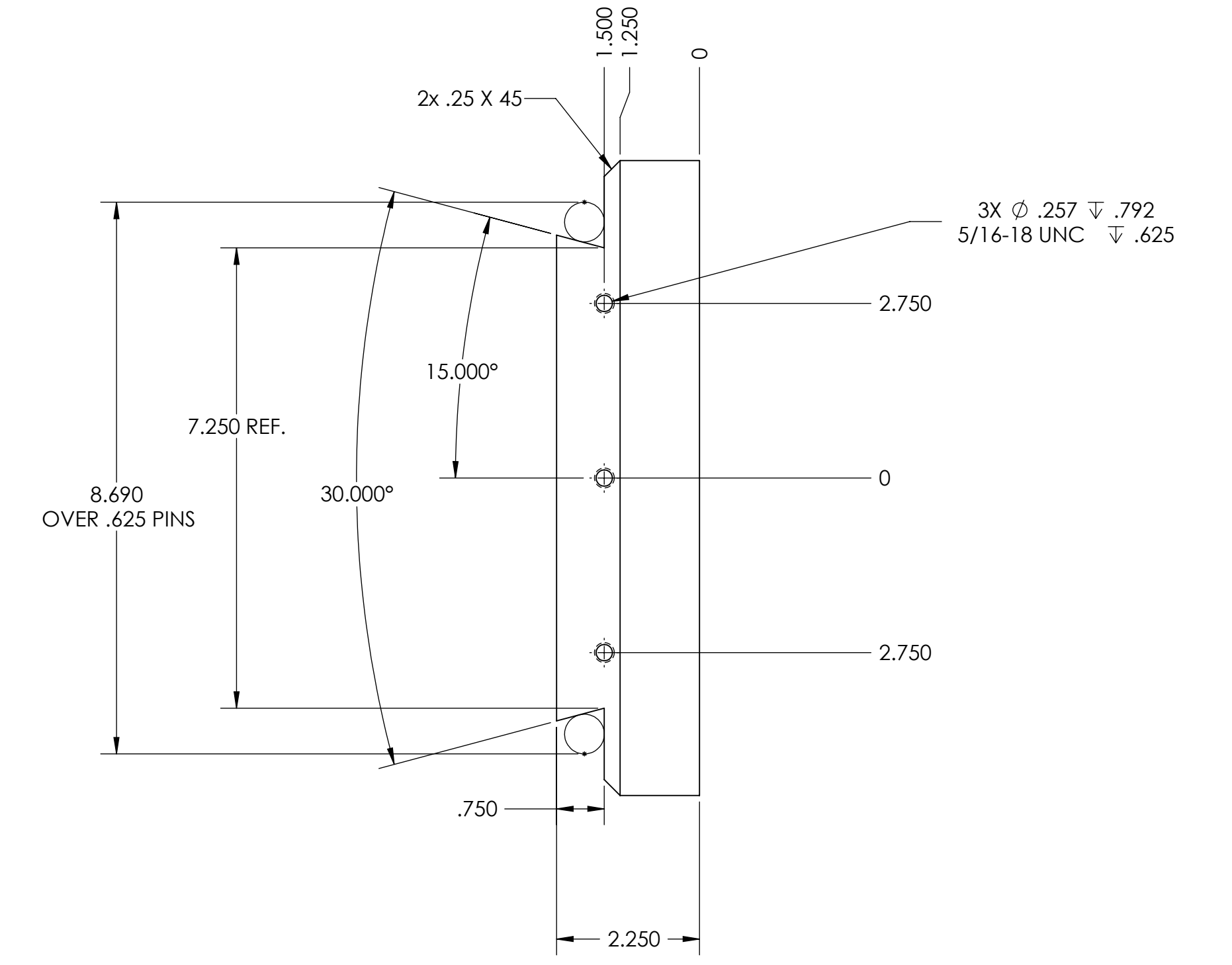
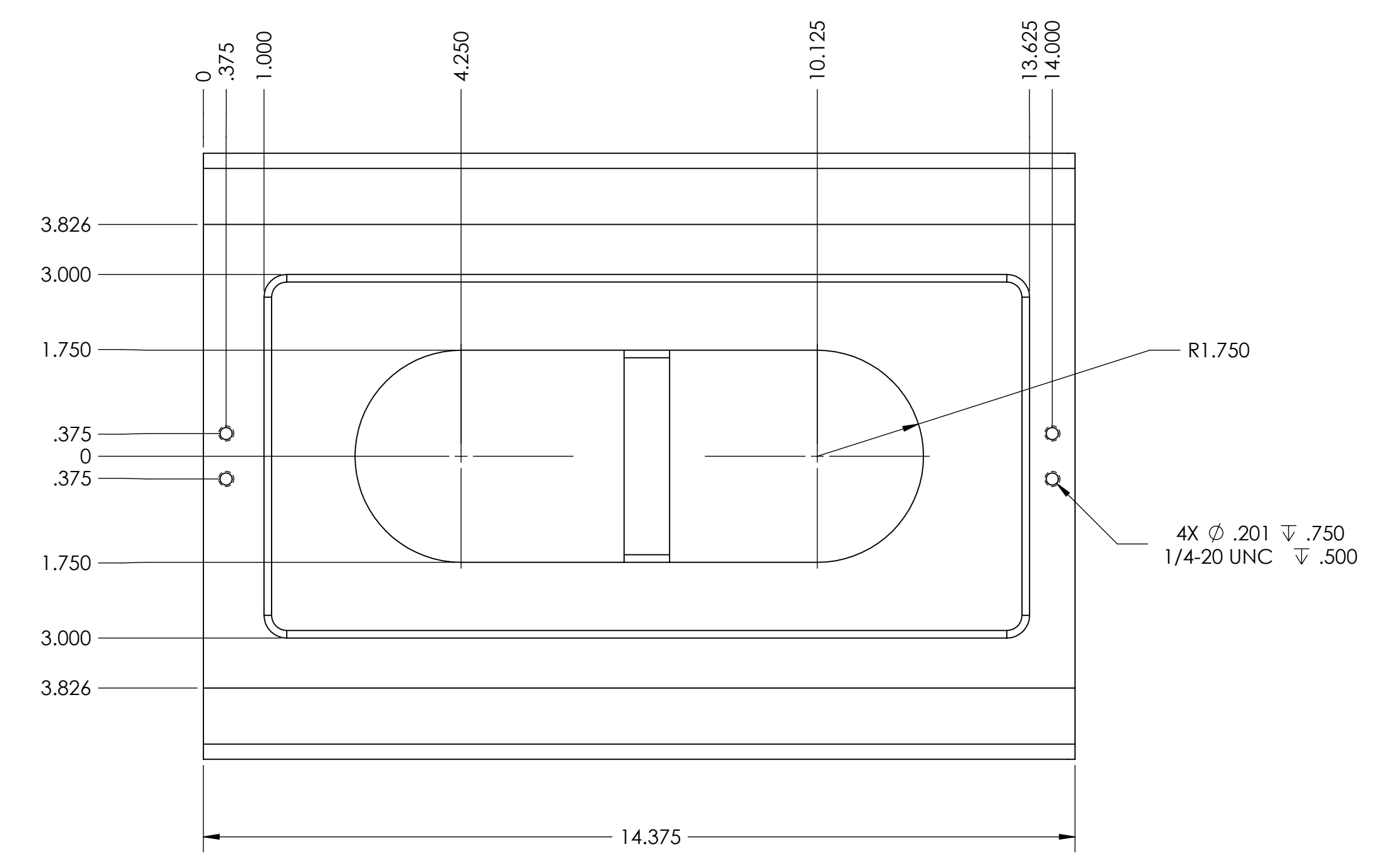
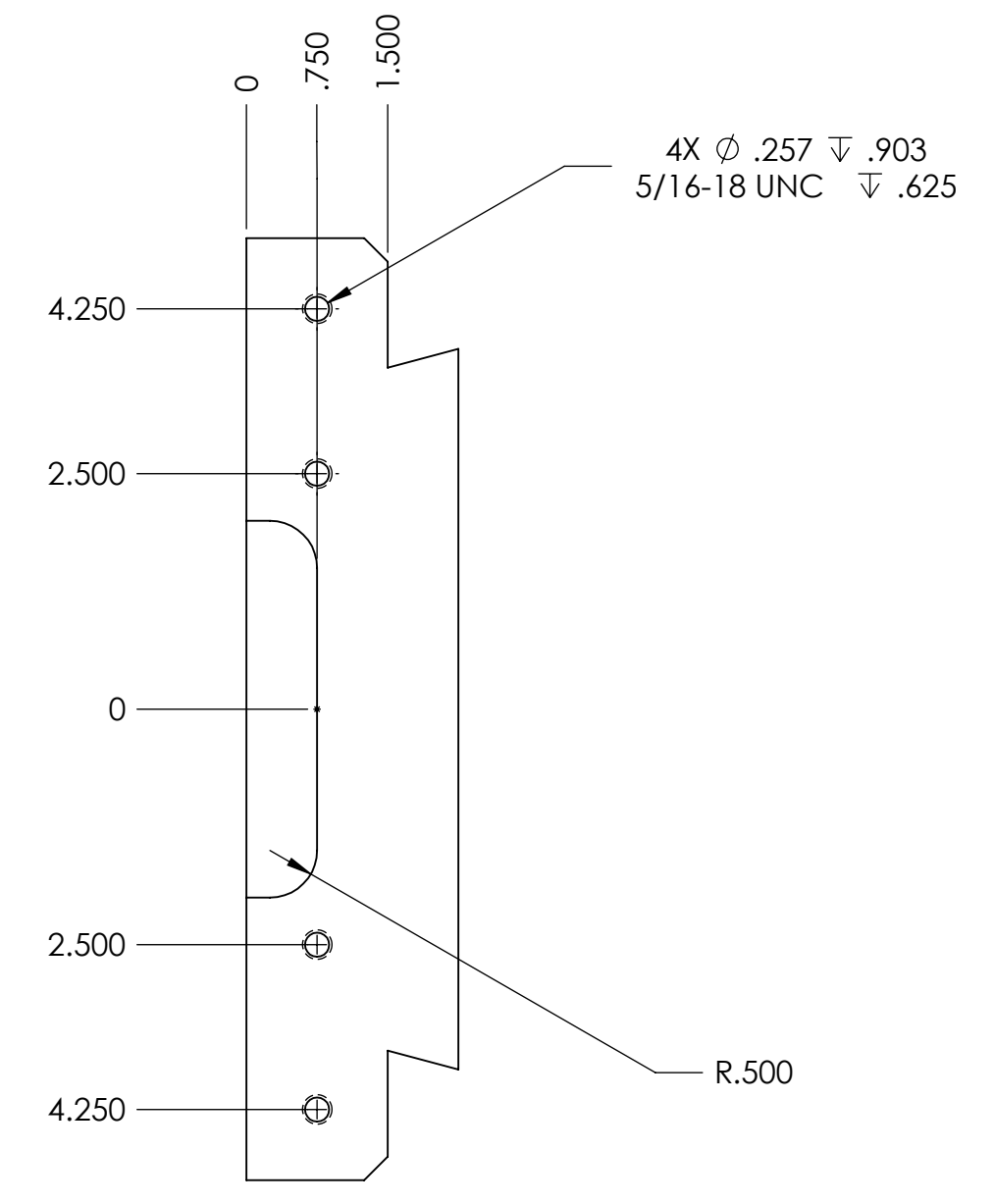


REVISIONS				
ZONE	REV.	DESCRIPTION	DATE	APPROVED
	C	REDESIGN	12/28/2011	



UNLESS OTHERWISE SPECIFIED TOLERANCES		NAME		DATE	PlaneWave Instruments CDK17 DOVETAIL
DECIMAL DIM	ANGULAR DIM	DRAWN	KAI	12/28/2011	
XXXX ± .0005	MACHINED ±.07° 30'	CHECKED			
XXX ± .005	LOCATED ±.07° 30'	ENG APPR.			
XX ± .02	FORMED ± 1°	MATERIAL:		6061-T6 AL ALLOY	
SURFACE FINISH		FINISH:		BLACK ANODIZE	
MAX R 0.015		SCALE: 1:2		D	
BREAK: ALL SHARP EDGES & REMOVE BURRS.		CAD FILE		170319C	
<small>PROPRIETARY AND CONFIDENTIAL THE INFORMATION CONTAINED IN THIS DRAWING IS THE SOLE PROPERTY OF PLANEWAVE INSTRUMENTS. ANY REPRODUCTION IN PART OR AS A WHOLE WITHOUT THE WRITTEN PERMISSION OF PLANEWAVE INSTRUMENTS IS PROHIBITED.</small>					SHEET 1 OF 1