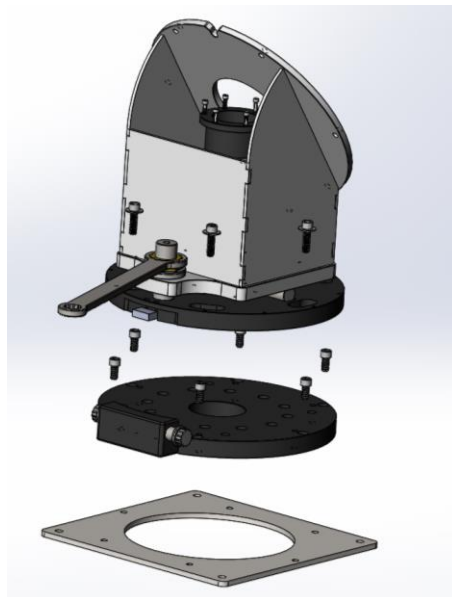


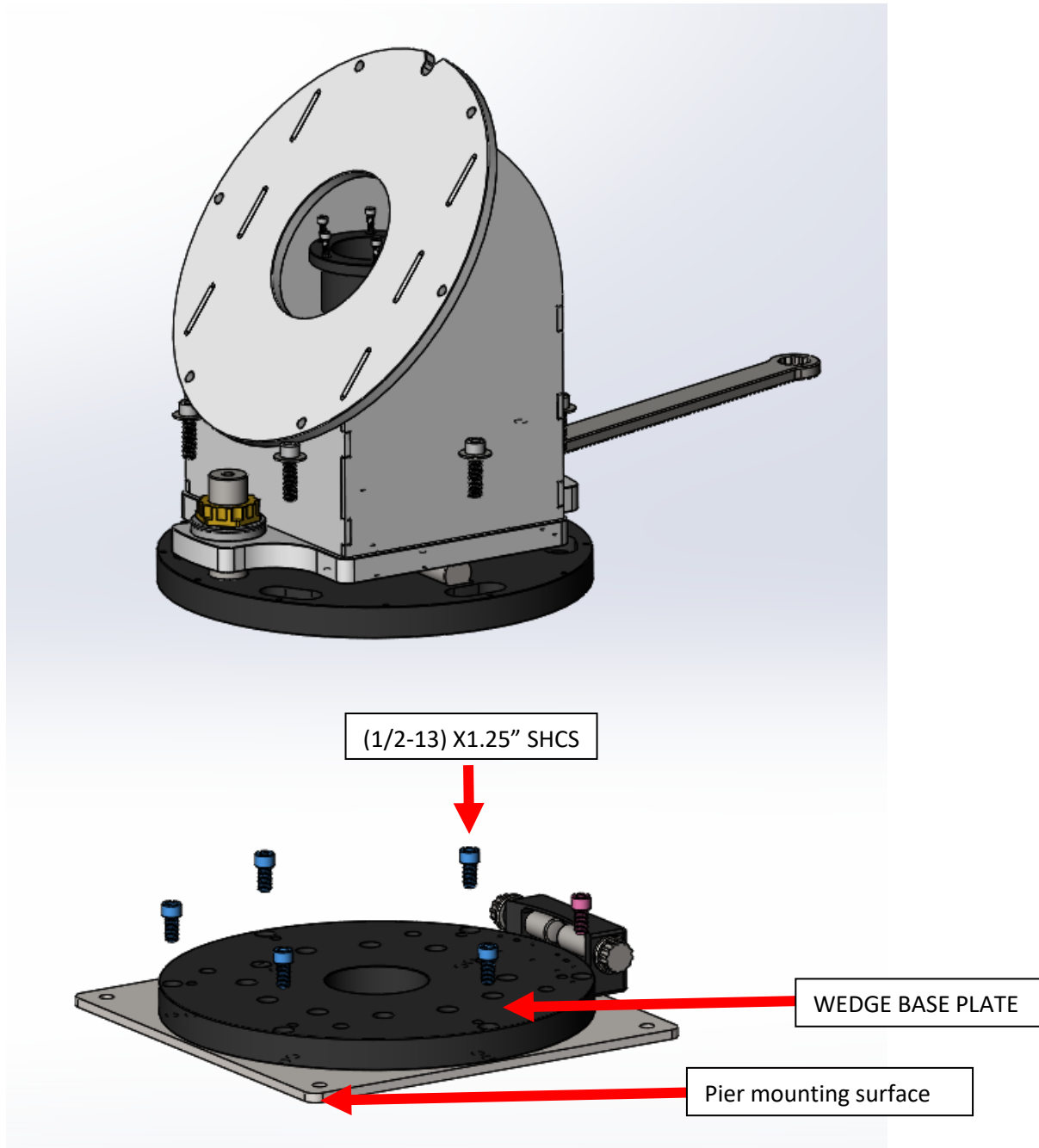


L500210 (L500-L600)
Polar Wedge
Assembly Instructions



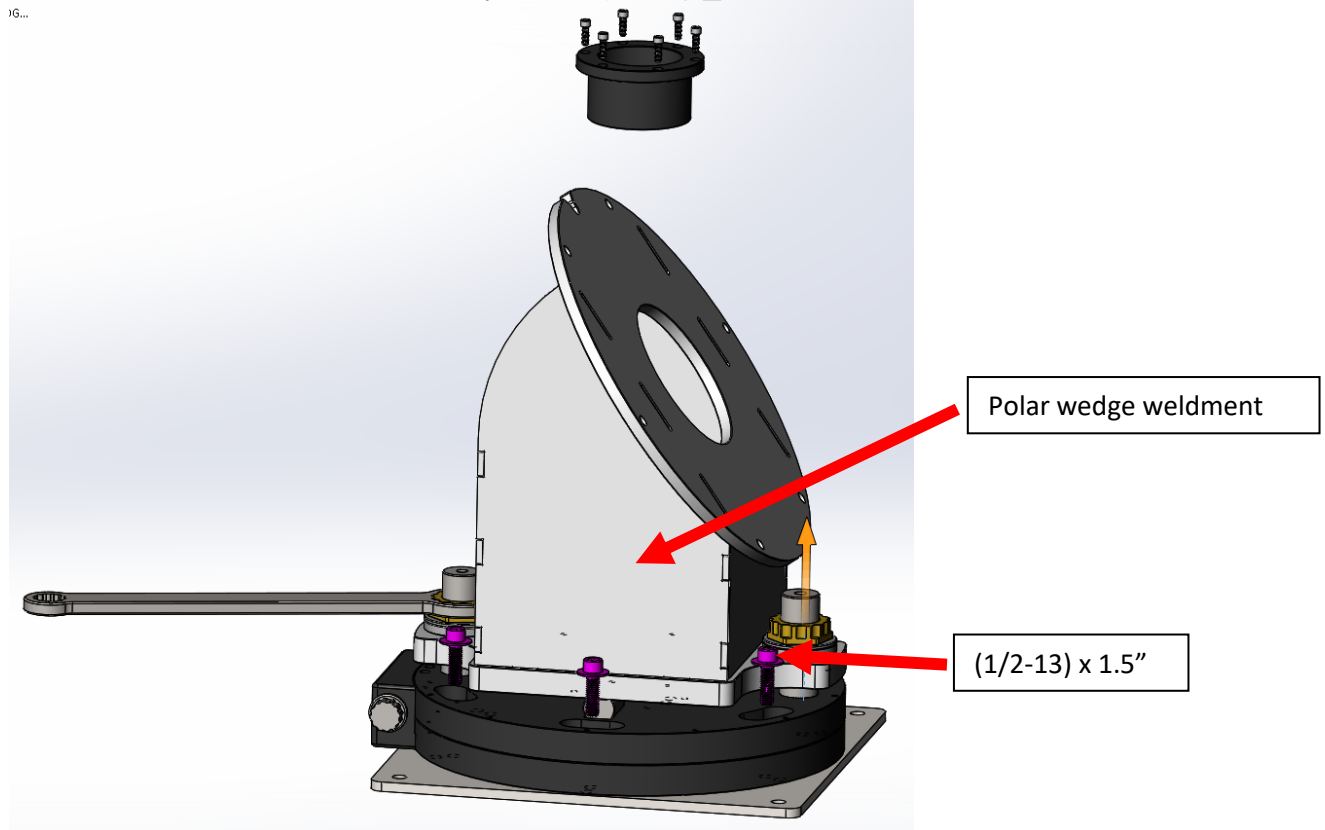
Step 1:

Use 6 (1/2-13) X 1.25" SHCS to attach Wedge Base Plate to mounting surface.



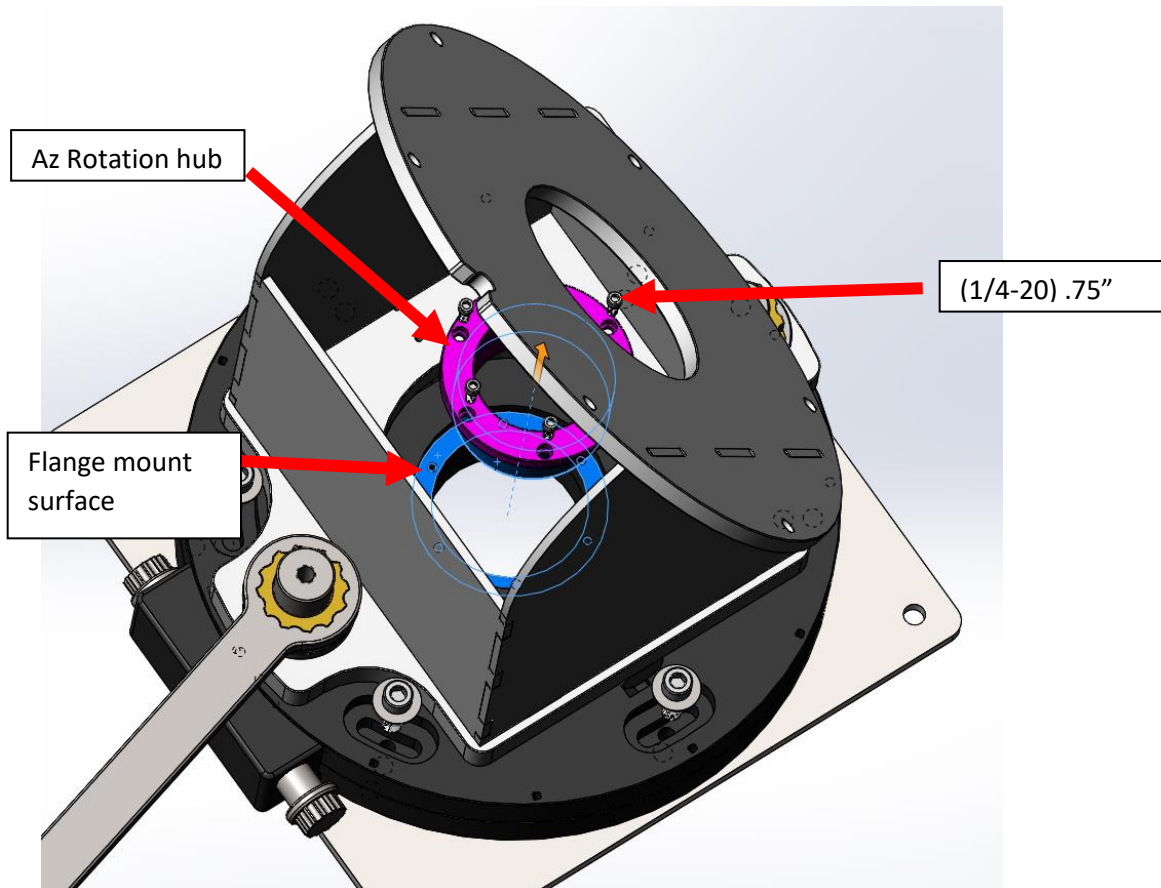
Step 2:

Using 6 (1/2-13) x 1.5" SHCS attach polar wedge weldment to the wedge base plate. Place the silver conical washers over the altitude bolts once the wedge-top is installed. Then install the brass nuts.



Step 3:

Using 6 (1/4-20) x 3/4" SHCS slip fit the wedge AZ Rotation hub into baseplate and bolt flange to bolt pattern on the base of the wedge weldment



Note on Turns per Degree:

ALT ADJUSTMENT SCREW: 1 TURN = .47 DEGREES

AZ ADJUSTMENT SCREW: 1 TURN = .33 DEGREES