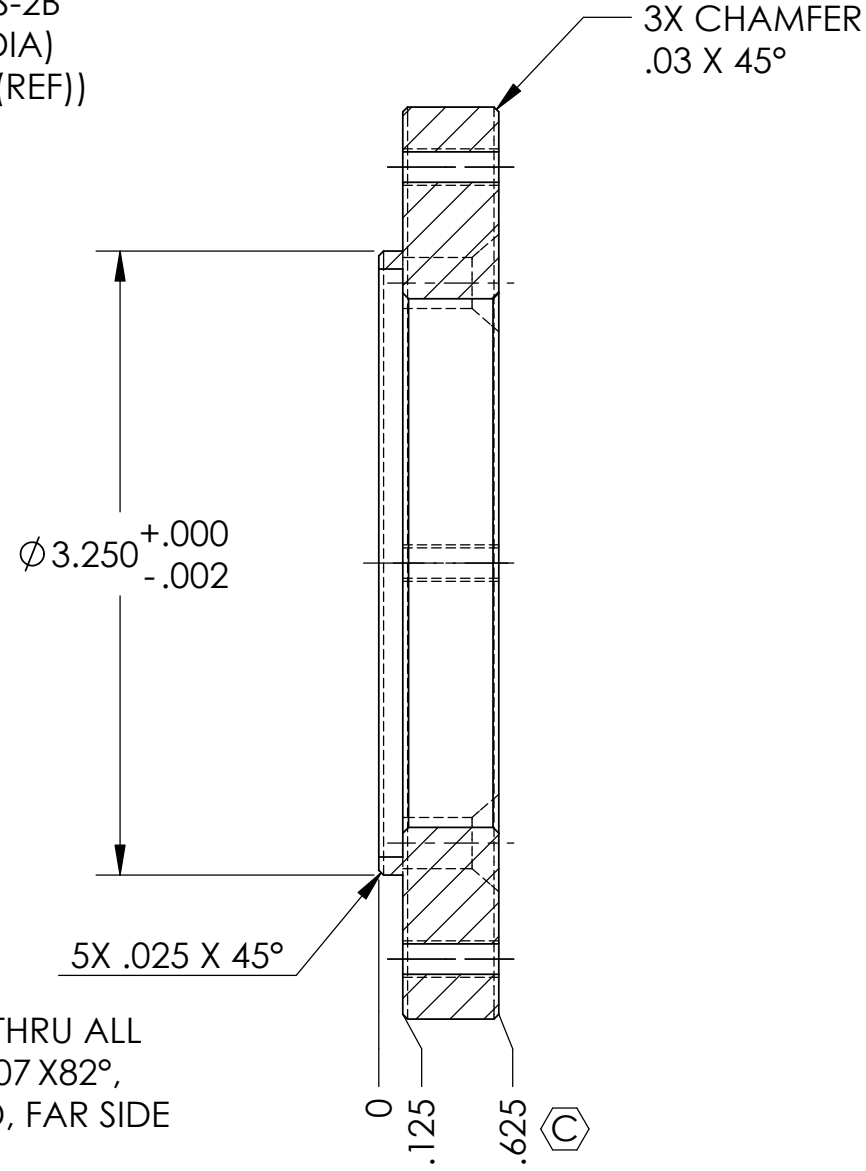
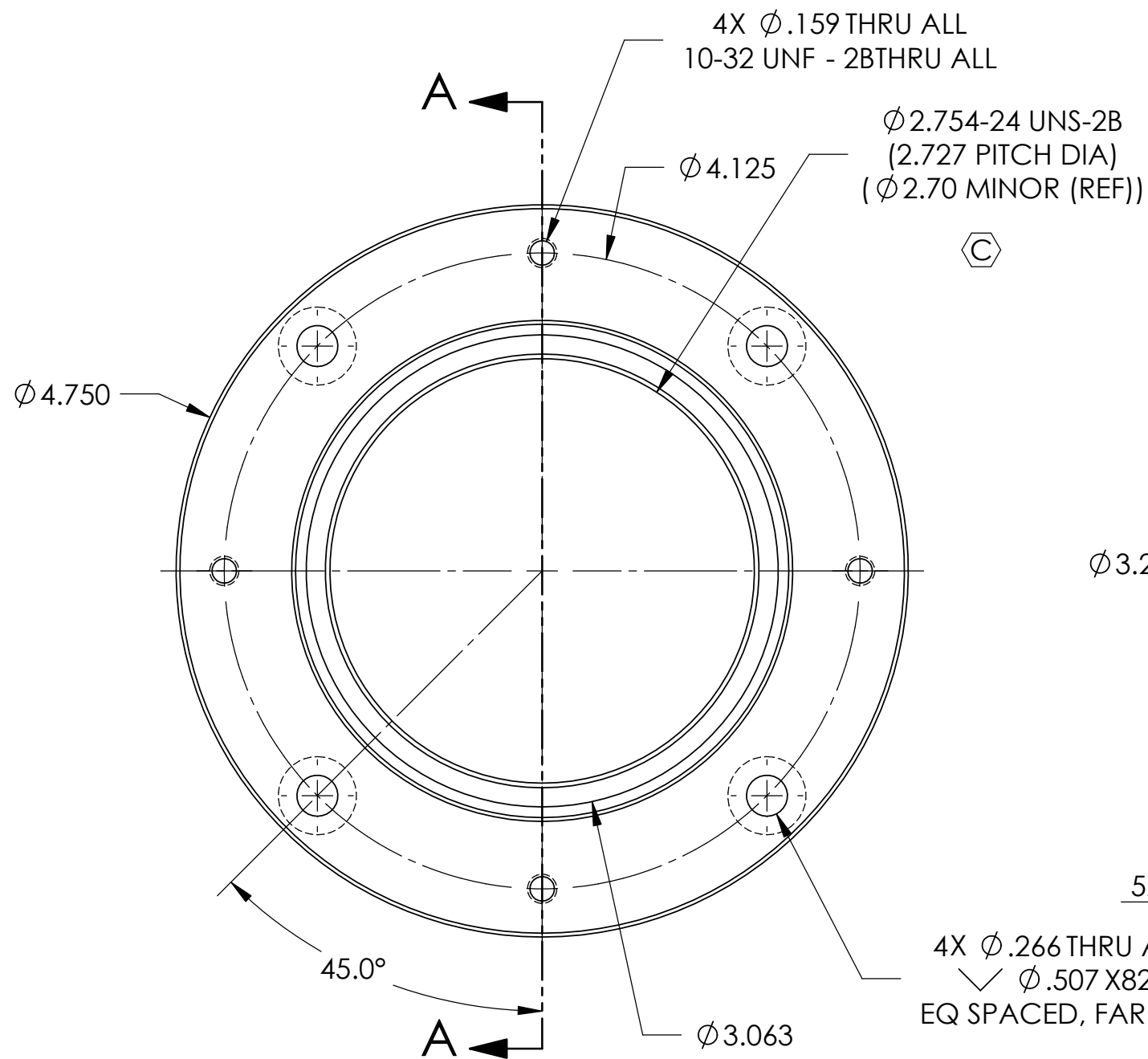


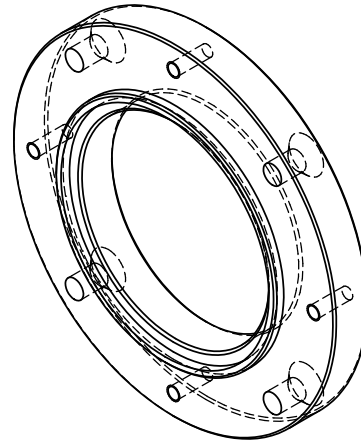
8 7 6 5 4 3 2 1

REVISIONS			
REV.	DESCRIPTION	DATE	APPROVED
C	ECN200391C	7/11/2008	

D
C
B
A



SECTION A-A



NOTES:

1. REMOVE ALL SHARP EDGES.
2. FINISH: BLACK ANODIZE PER MIL-A-8625, TYPE II, CLASS 2

PROPRIETARY AND CONFIDENTIAL
THE INFORMATION CONTAINED IN THIS DRAWING IS THE SOLE PROPERTY OF PLANEWAVE INSTRUMENTS. ANY REPRODUCTION IN PART OR AS A WHOLE WITHOUT THE WRITTEN PERMISSION OF PLANEWAVE INSTRUMENTS IS PROHIBITED.

UNLESS OTHERWISE SPECIFIED TOLERANCES

DECIMAL DIM .XXXX ±.0005 .XXX ±.005 .XX ±.02	ANGULAR DIM MACHINED ±0° 30' LOCATING ±0° 30' FORMED ±1° CHAMFERS ±5°
---	---

SURFACE FINISH $\sqrt{63}$
MAX R 0.015
BREAK ALL SHARP EDGES & REMOVE BURRS.

DRAWN	NAME	DATE
CHECKED	BP	5/9/08
ENG APPR.		
MATERIAL 6061-T6 AL ALLOY		
FINISH SEE NOTE		

PLANEwave Instruments		
TITLE PWI TO AP FEMALE THREAD		
SIZE	DWG. NO.	REV.
B	200391	C
SCALE: 1:1	CAD FILE: 200391C	SHEET 1 OF 1

8 7 6 5 4 3 2 1