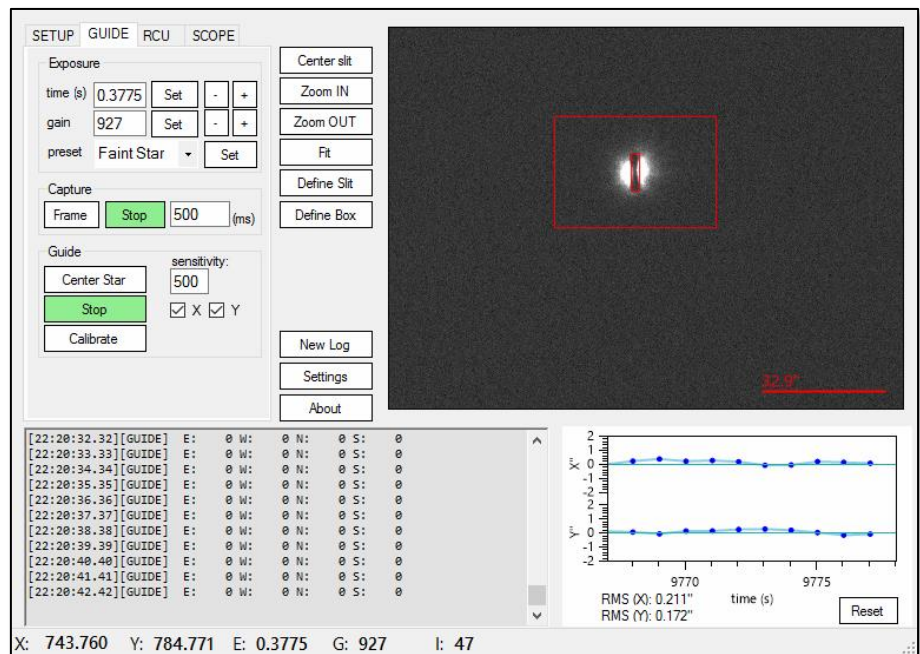
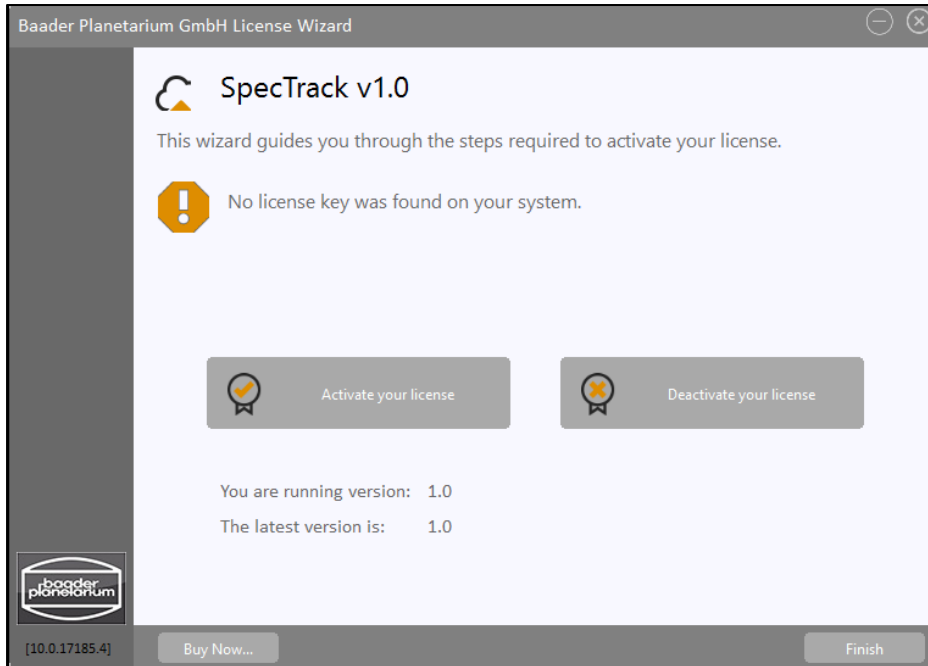


SpecTrack

SpecTrack Installation and License Wizard, Version 1.0



BAADER PLANETARIUM GMBH
Zur Sternwarte • D-82291 Mammendorf • Tel. +49 (0) 81 45 / 8089-0 • Fax +49 (0) 81 45 / 8089-105
Baader-Planetarium.com • kontakt@baader-planetarium.de • Celestron-Deutschland.de

Copyright: Baader Planetarium GmbH, Mammendorf 2017

This software and the manual are copyrighted in all parts. All rights reserved, in particular the right of electronic copying and storage in publicly accessible electronic media, the lecture, as well as the translation. The right to modify and adapt for use in other software packages is expressly excluded.

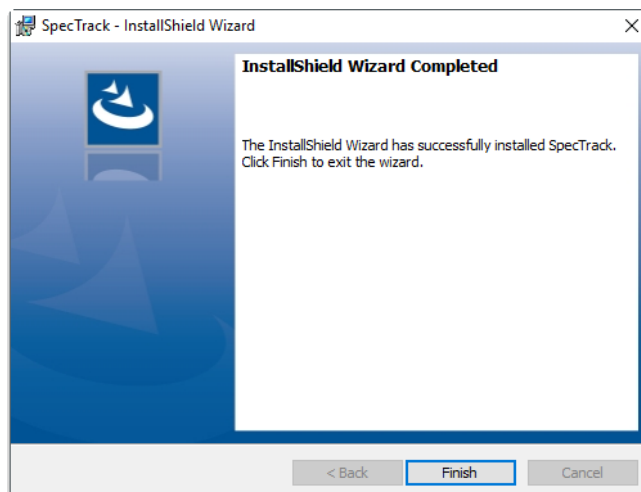
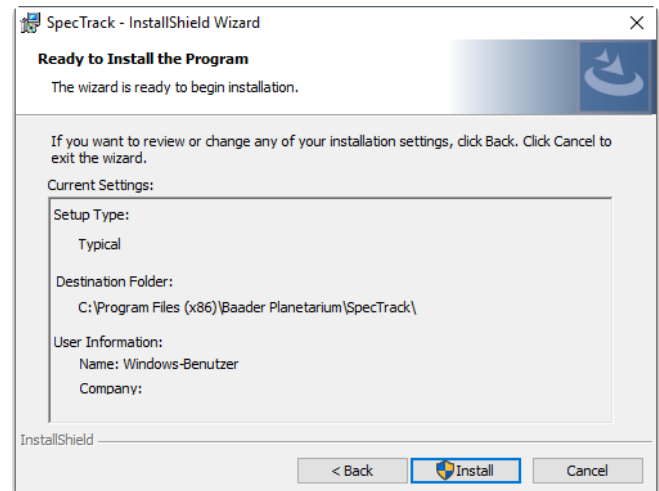
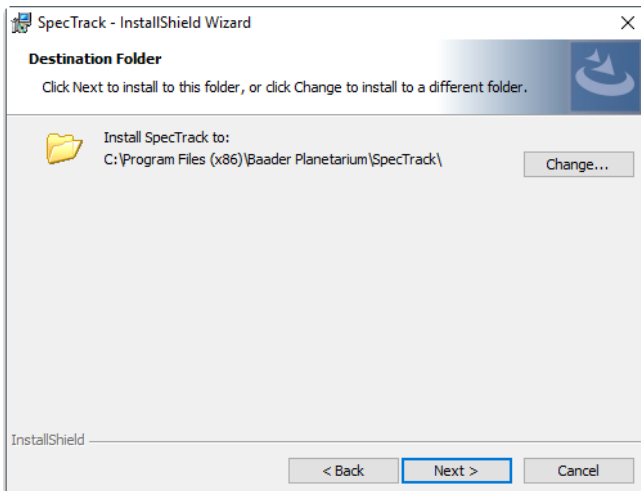
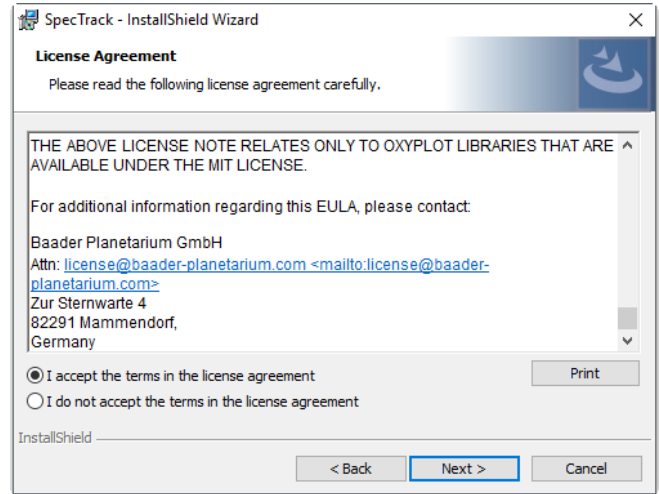
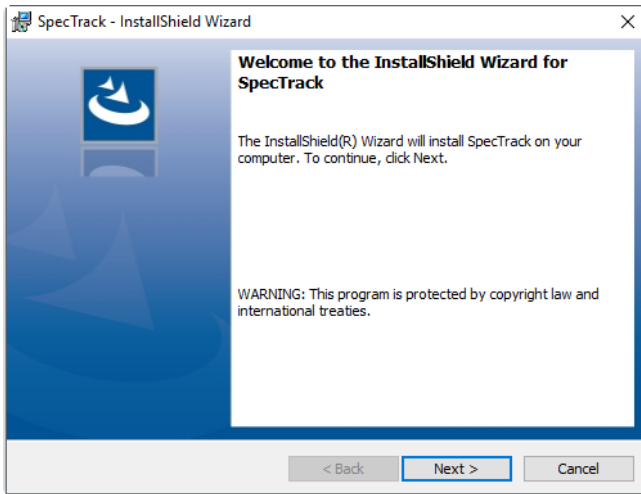
Regardless of the care taken in the preparation of text, pictures and software, neither Baader Planetarium GmbH nor the author can assume legal responsibility or liability for possible errors and their consequences.

If necessary. Trade names, descriptions of products, etc., reproduced in this manual may also be without explicit labeling marks and as such may be subject to legal requirements.

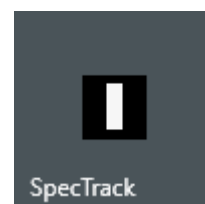
BAADER PLANETARIUM GmbH, Zur Sternwarte, D – 82291 Mammendorf/Germany
Contact: +49(0)8145 - 8089-0, kontakt@baader-planetarium.de

1. Installation of SpecTrack Guiding Software

Launch *setup.exe* of the SpecTrack installer and follow the suggested installation procedure.



After confirmation (Finish) the icon of the executable program file appears in the start menu: ***SpecTrack***.

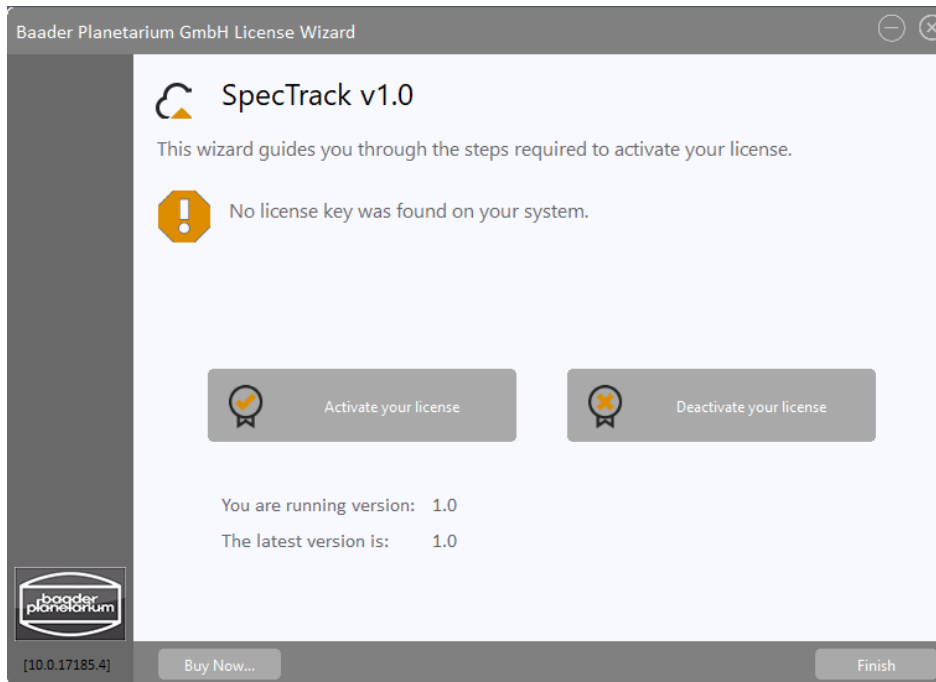
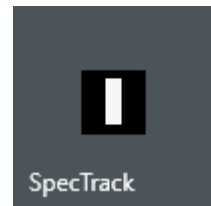


2. Activate your License

You are entitled to activate SpecTrack on three systems simultaneously.

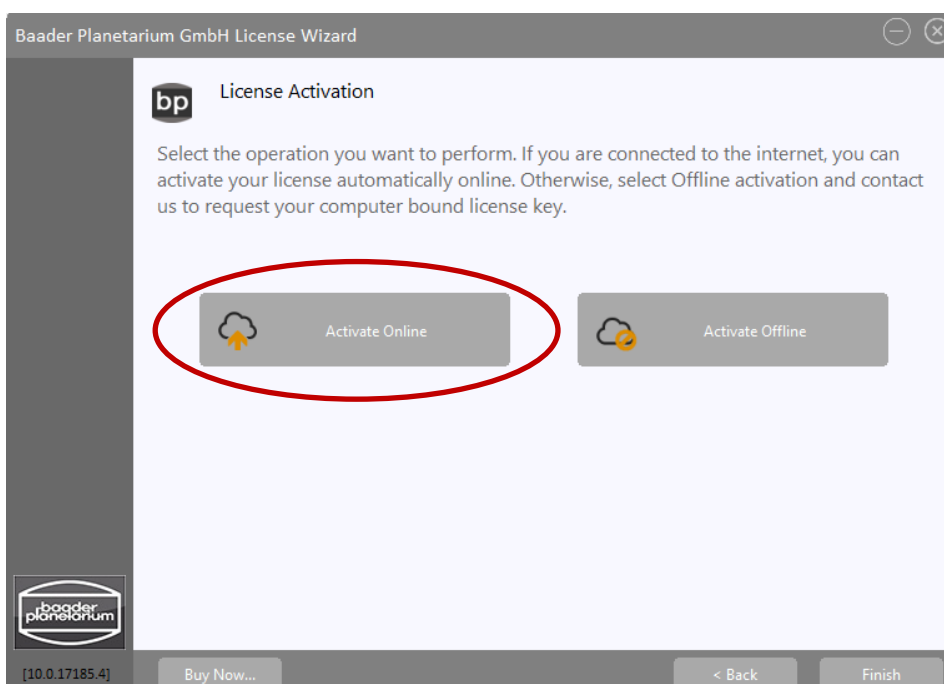
Launch SpecTrack.exe

Press the button **Activate your license**.

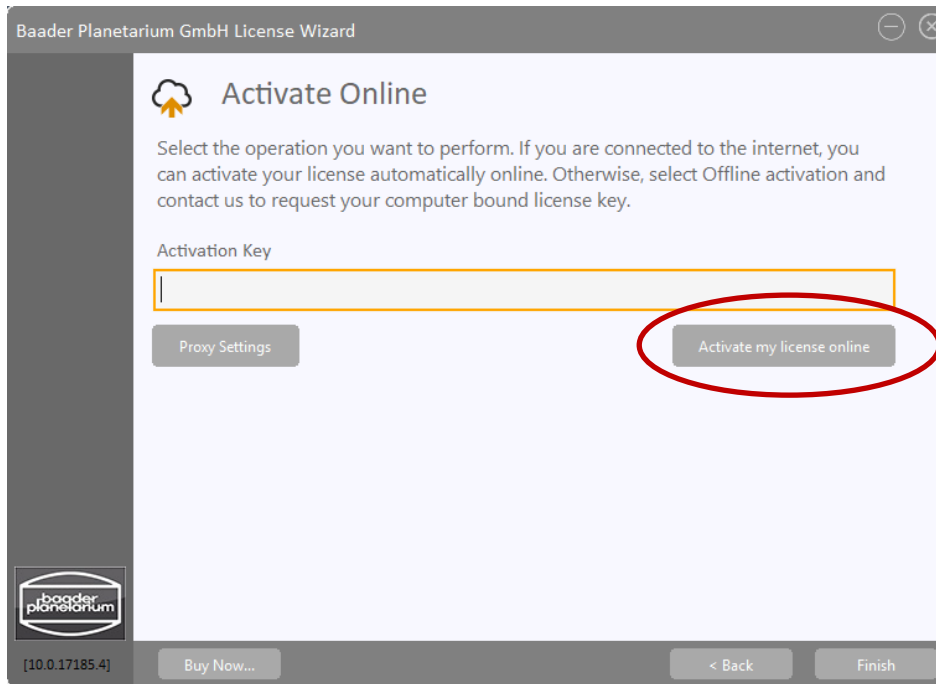


You can activate the license online or offline. We recommend online activation, because you can work with SpecTrack immediately.

1. Activate Online

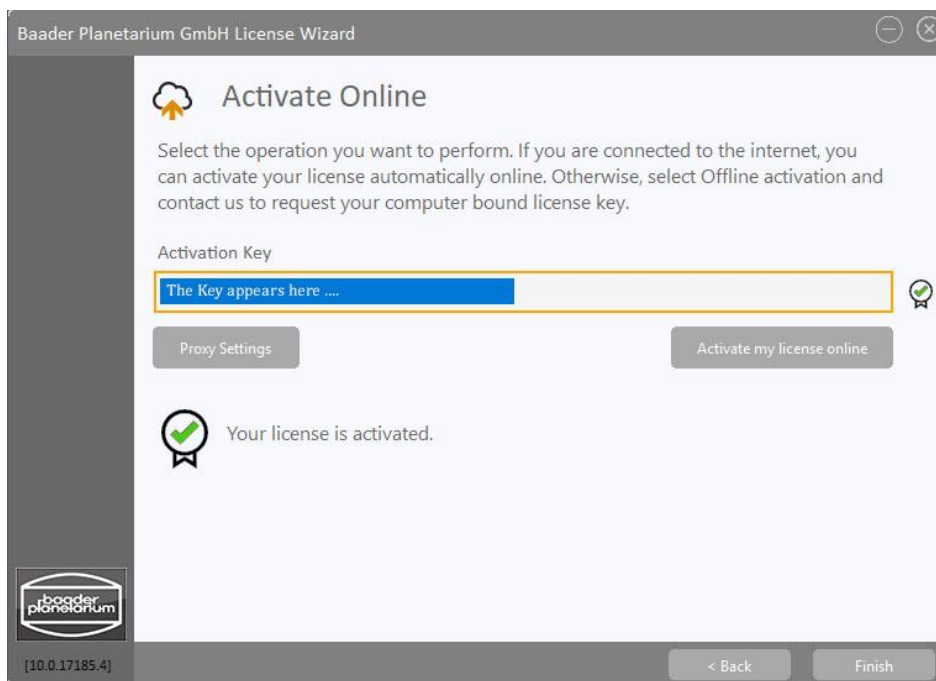


Press the button **Activate my license online**



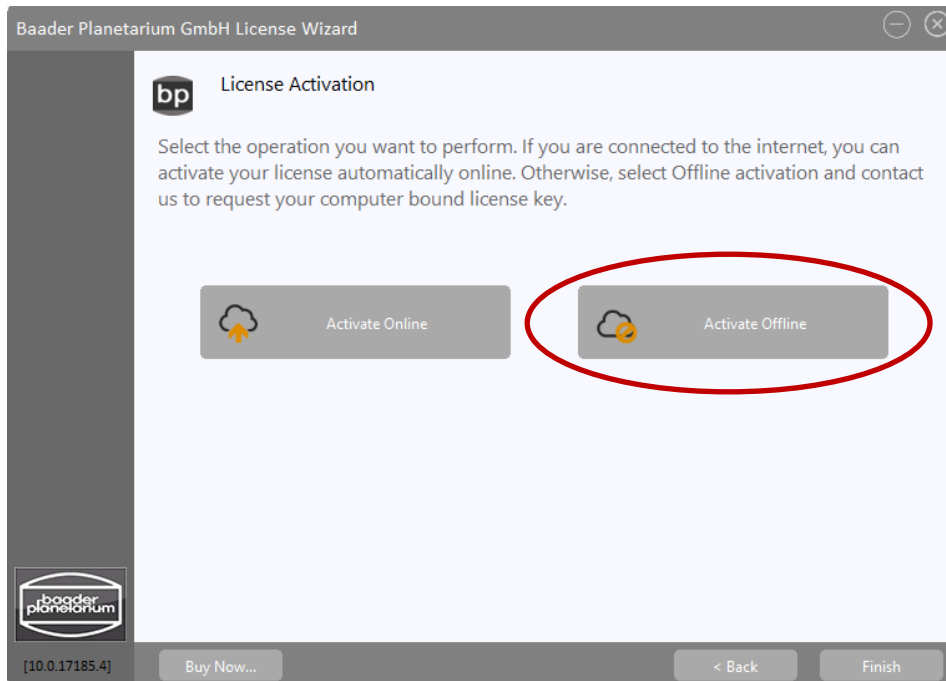
Enter the **Activation key** you received after purchase.

A successful activation is confirmed by **Your license is activated.**

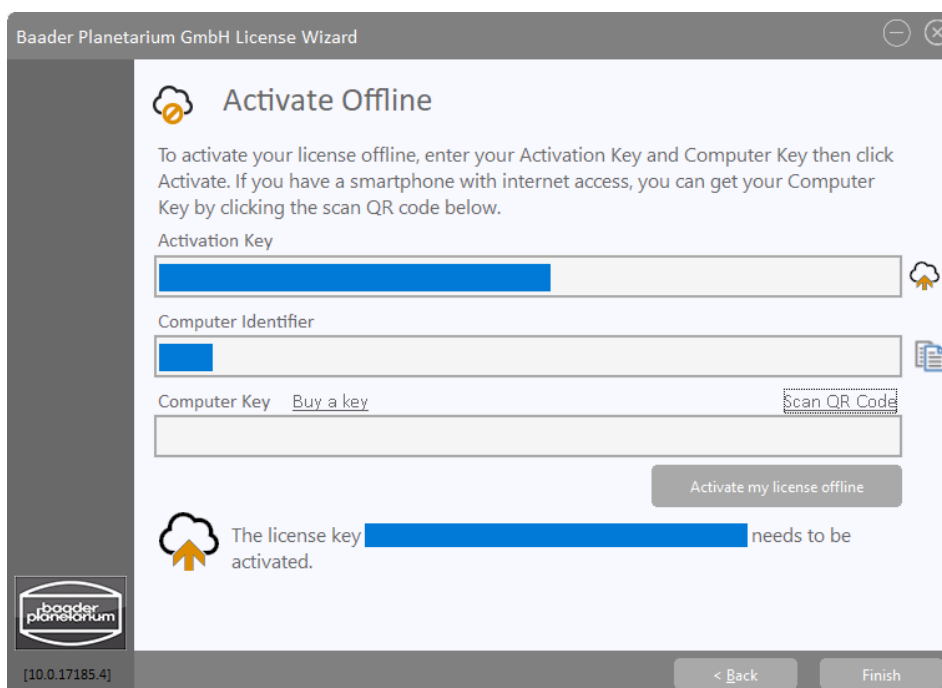


2. Activate Offline

Press the button **Activate Offline**

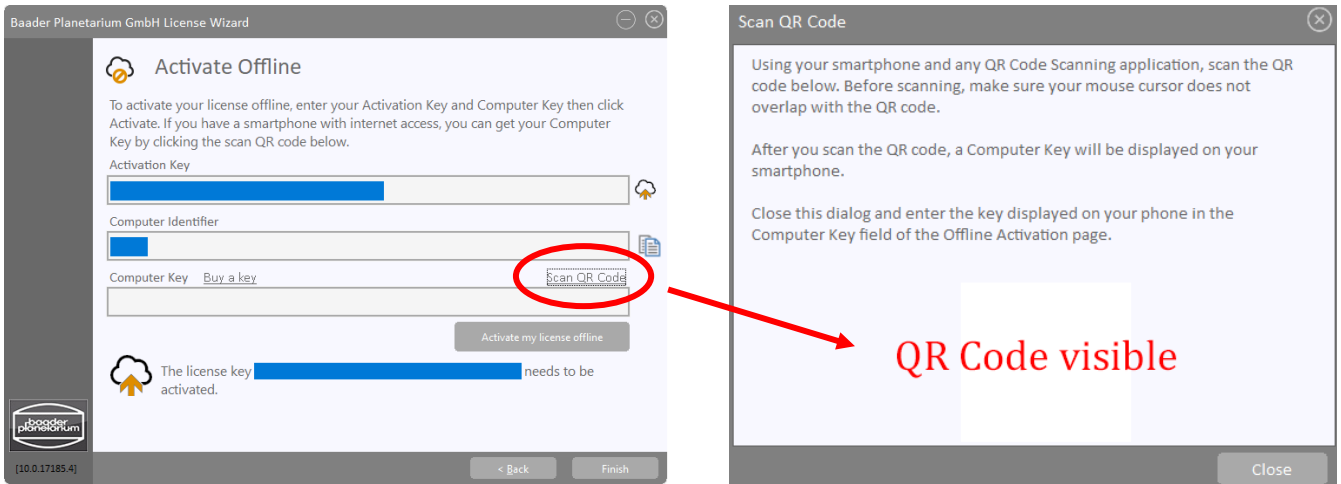


Enter your **Activation Key** and **Computer Key** (this should be automatically detected). If you do not have an Activation Key then press **Buy a key**. You will be directed to the Website of Baader Planetarium GmbH to obtain your license.



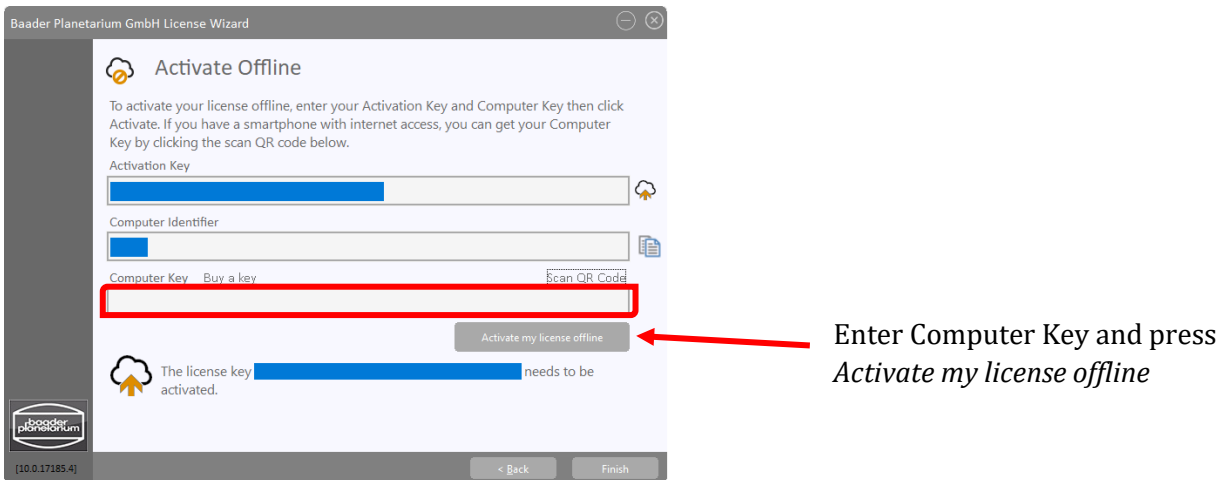
Using your Smartphone for Offline Activation

To use your smartphone to perform an offline activation click **Scan QR Code**.

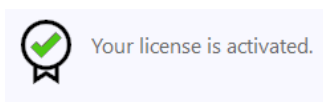


After you scan the QR Code, a Computer Key will be displayed on your smartphone. Close this dialog and enter the key displayed on your phone in the Computer Key field of the Offline Activation page. This will allow you to use a QR code reader on your smartphone which will then take you to the activation portal and will automatically provide you with a unique Computer Key.

Enter the unique **Computer Key** and press **Active my license offline**. Your product is now activated.



You will finally get the message:



and SpecTrack will be launched.

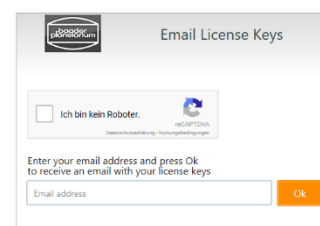
Note: If you do not have a smartphone or tablet you can also email us for your **Computer Key**.

Email us for Activation Code

Email the following details to license@baader-planetarium.com for to receive your unique **Computer Key**

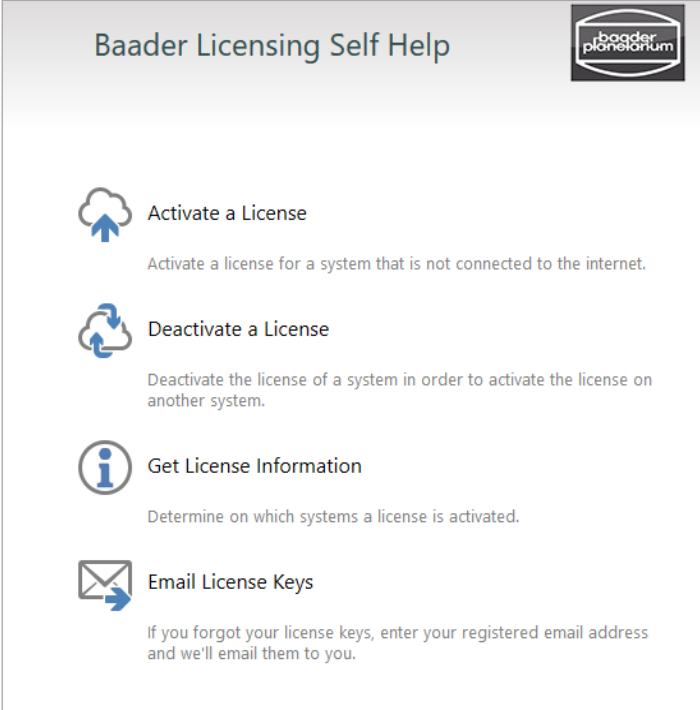
1. Activation Key
2. Computer Identifier

We will issue you with your Computer Key for offline activation as soon as possible in reply.



3. Baader Licensing Self Help

The Baader Licensing Self Help is location at <https://license.baader-planetarium.com>



Baader Licensing Self Help

Activate a License
Activate a license for a system that is not connected to the internet.

Deactivate a License
Deactivate the license of a system in order to activate the license on another system.

Get License Information
Determine on which systems a license is activated.

Email License Keys
If you forgot your license keys, enter your registered email address and we'll email them to you.

You can manage your purchased licenses. Decide for yourself on which systems you want to activate or deactivate SpecTrack. You are entitled to activate SpecTrack on three systems simultaneously.

Begin with **Get License Information**. You will be told on which systems SpecTrack is installed.

Deactivate a License:

Type in the **Activation Key** and the **Computer ID** you want to deactivate, then press button **Deactivate**. Then **Get License Information** to confirm.

Activate a License:

Type in the **Activation Key** and the **Computer ID** you want to activate, then press button **Activate**. You will obtain a **Computer Bound Key**.



BAADER PLANETARIUM

G
M
B
H

Zur Sternwarte • D-82291 Mammendorf • Tel. +49 (0) 81 45 / 8089-0 • Fax +49 (0) 81 45 / 8089-105
Baader-Planetarium.com • kontakt@baader-planetarium.de • Celestron-Deutschland.de